

# SuperLite® 17B Helmet

P/N 500-010 / 500-011



Location #	Part #	Description
1	520-054	Visor
2	510-521	Head Cushion Assembly
	510-522	Head Cushion Bag
3	510-837	Head Cushion Foam Spacer Assembly (Order P/N 525-745)
	510-836	Head Cushion Foam Spacer Bag
4	530-090	Alignment Screw
5	550-339	Alignment Sleeve
6	505-024	Side Block Assembly (B)
7	520-033	O-ring, Teflon®
8	555-154	Bent tube Assembly, No O-rings
9	510-012	O-ring
10	555-155	Bent Tube Assem w/O-rings
11	560-023	Starboard Weight, SL 17A/B
	560-022	Starboard Weight, SL 17A/B, Chrome
12	530-032	Screw
13	520-065	Helmet Shell, 17B <i>Includes location #1</i>
14	560-005	Rear Weight
	560-006	Rear Weight, Chrome
15	530-070	Screw
16	530-540	Washer
17	560-014	Handle, SL 17A/B
	560-015	Handle, SL 17A/B, Chrome
18	530-040	Screw
19	510-762	Air Train Gasket
20	530-050	Screw
21	530-535	Washer
22	530-415	Washer, Lock
23	530-317	Nut
24	545-016	Air Train
25	530-535	Washer
26	530-317	Nut
27	530-052	Screw, Port Plug
28	530-035	Screw

Location #	Part #	Description
29	550-062	Knob, Nose Block
30	555-180	Packing Nut
31	510-008	O-ring
32	550-116	Nose Block Guide
33	560-070	Port Retainer, w/#32
34	510-010	O-ring
35	520-004	Face Port
	560-019	Weight, Port, SL 17B
36	560-018	Weight, Port, SL 17B, Chrome
37	510-260	O-ring, View Port
38	505-130	Chin Strap
39	550-063	Body, Water Dump
40	510-561	Valve, Water Dump, Black
41	510-033	O-ring
42	520-042	Tie Wrap
43	530-019	Screw
44	510-007	O-ring
45	560-530	Cover, Water Dump Adapter
46	510-786	Starboard Whisker Wing
47	510-760	Quad Valve Exhaust Main Body
48	520-042	Tie Wrap
49	520-200	Whisker Exhaust Valve Insert
50	510-776	Exhaust Valve
51	520-118	Tri/Quad Valve Whisker Clamp
52	530-008	Brass Screw
53	530-009	Brass Nut
54	510-787	Port Whisker Wing
55	505-730	Quad Valve Exhaust Assembly
56	530-045	Screw
57	550-061	Spacer
58	540-015	Kidney Plate
59	505-027	Demand Regulator Assembly "B" <i>Purchase 525-773 Kit</i>
60	540-054	Earphone Retainer
61	530-540	Washer

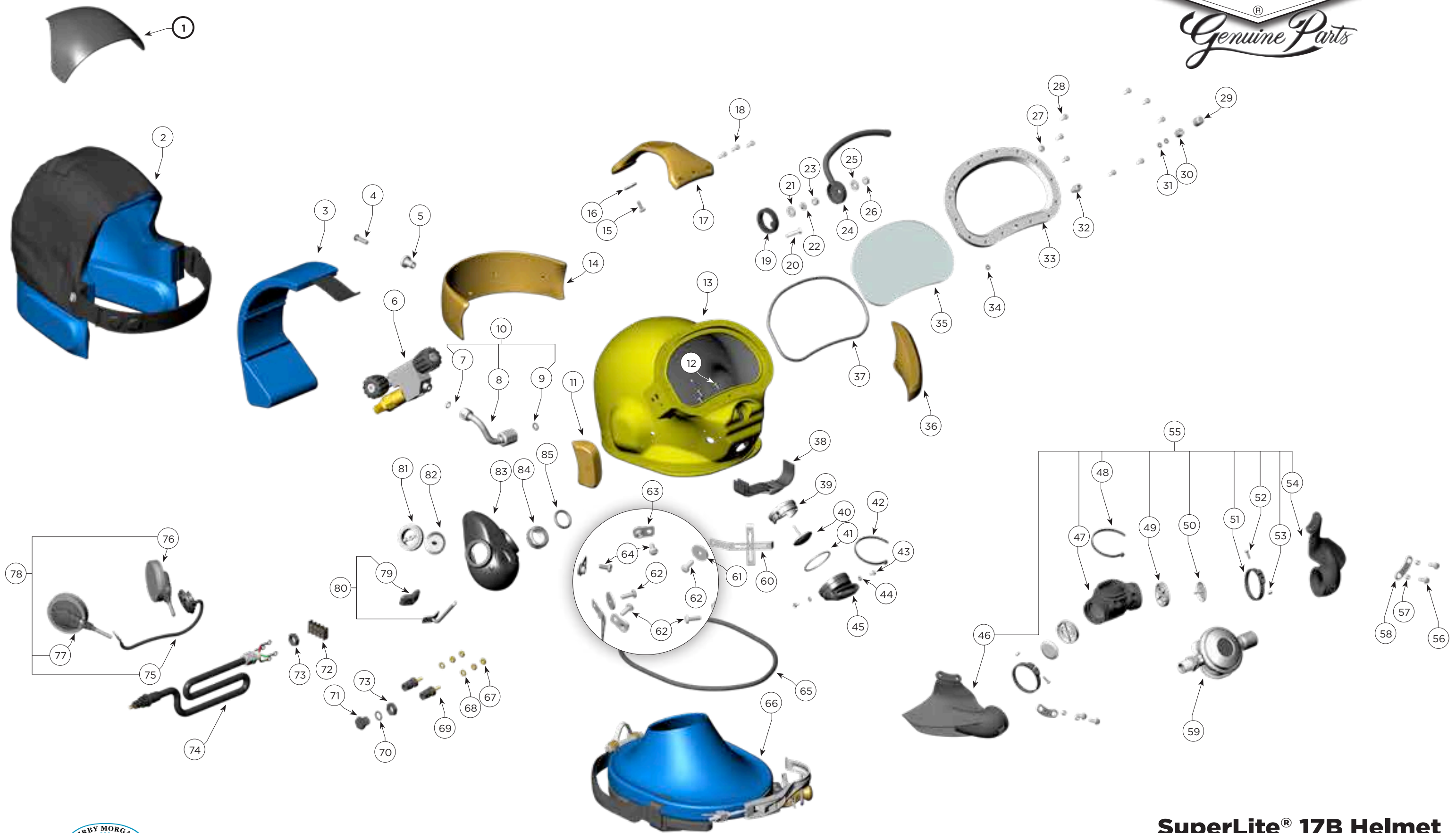
Location #	Part #	Description
62	530-070	Screw
63	545-027	Snap Tab
64	530-078	Screw
65	510-446	O-ring, SL 17A/B, Bottom
66	505-008	Neck Clamp/Yoke Assembly
67	530-308	Hex Nut
68	530-525	Washer
69	515-035	Communications Post
70	510-481	O-ring
71	550-043	Plug
72	515-062	Terminal Block
73	550-040	Nut
74	505-047	W.P. Connector Assembly
75	515-029	Microphone Assembly
76	515-019	Earphone, Left, 15.5"
77	515-018	Earphone, Right, 9"
78	515-033	Communications Set
79	510-575	Nose Block Pad
80	545-015	Nose Block Device <i>Includes location #79</i>
81	520-020	Valve Body
82	510-550	Valve, Oral Nasal
83	510-747	Oral Nasal Mask
84	550-038	Nut, Regulator Mount
85	510-490	O-ring

**⚠ CAUTION**

**Use only Kirby Morgan original replacement parts. The use of other manufacturers' parts will interfere with the performance characteristics of your life support equipment and may jeopardize your safety. Additionally, any substitutions will void any warranties offered by KMDSI. When ordering spares, always insist on Kirby Morgan original parts.**



Kirby Morgan Dive Systems, Inc.® 1430 Jason Way, Santa Maria, CA 93455  
 Phone: 805/928-7772 Fax: 805/928-0342  
[www.KirbyMorgan.com](http://www.KirbyMorgan.com) e-mail: [kmdsi@KirbyMorgan.com](mailto:kmdsi@KirbyMorgan.com)



**Kirby Morgan Dive Systems, Inc.**<sup>®</sup> 1430 Jason Way, Santa Maria, CA 93455  
 Phone: 805/928-7772 Fax: 805/928-0342  
[www.KirbyMorgan.com](http://www.KirbyMorgan.com) e-mail: [kmdsi@KirbyMorgan.com](mailto:kmdsi@KirbyMorgan.com)

**SuperLite<sup>®</sup> 17B Helmet**